



Global Cooperation Policy Enhancement and Strategic Promotion

Strengthening Europe's position in international research collaboration through the Marie Skłodowska-Curie Actions programme across 20 countries and 6 regions

GLOBAL ONLINE SESSIONS

Horizon Europe Marie Skłodowska Curie Actions

Navigating MSCA: Actions and Tools

24 March 2026

MSCA-GLOPOL has received funding from the European Union's Research and Innovation Program Horizon Europe under grant agreement No 101202507



**Funded by
the European Union**

AGENDA

Introduction to MSCA Actions

- Structure of the MSCA portfolio under Horizon Europe
- MSCA actions currently open for participation
- Objectives, scope, and target groups of each action
- Key differences between actions and typical use cases
- How to identify the most appropriate MSCA action
- Participation pathways for associated and non-associated countries
- Beneficiary and associated partner roles explained

Introduction of Horizon Europe in General

EURATOM



2021-2027

Budget: EUR 95.5 billion

Pillar I: Excellent Science

Reinforcing and extending the excellence of the Union's science base

European Research Council

Frontier research by the best researchers and their teams

€16 billion

Marie Skłodowska Curie Actions

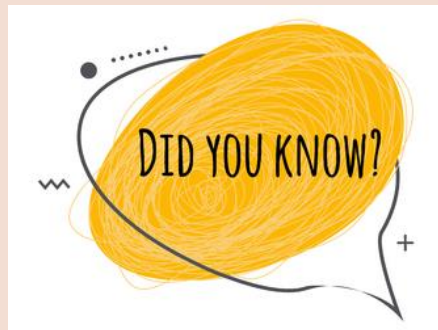
Equipping researchers with new knowledge and skills through mobility and training

€6.6 billion

Research Infrastructures

Integrated and inter-connected world-class research infrastructures

€2.4 billion



23 Nobel Prize winners either backed by or involved in the Marie Skłodowska-Curie Actions between 2012 and 2024



Key features



Researchers' training, skills and career development (all stages of career)



Excellent research in all domains (bottom-up approach)



International, inter-sectoral (academic/non-academic) & interdisciplinary mobility



Attractive working and employment conditions








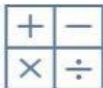


Structuring impact on organisations across the EU and beyond



Contributing to EU competitiveness



Scientific panels

	Chemistry	CHE
	Economic Sciences	ECO
	Information Science and Engineering	ENG
	Environment and Geosciences	ENV
	Life Sciences	LIF
	Mathematics	MAT
	Physics	PHY
	Social Sciences and Humanities	SOC

MSCA Actions

Doctoral Network

- Intl Consortium
- Multiple Researchers Recruited

Postdoctoral Fellowship

- Single Beneficiary with Partners
- Single Researcher

Staff Exchange

- Intl Consortium
- Multiple Researchers Participate

COFUND

- Single Beneficiary with Partners
- Multiple Researchers Recruited

Choose Europe for Science

- Single Beneficiary with Partners
- Multiple Researchers Recruited

MSCA & Citizens

- Single Beneficiary or Consortium
- Multiple Researchers Participate



Researcher applies directly to our call



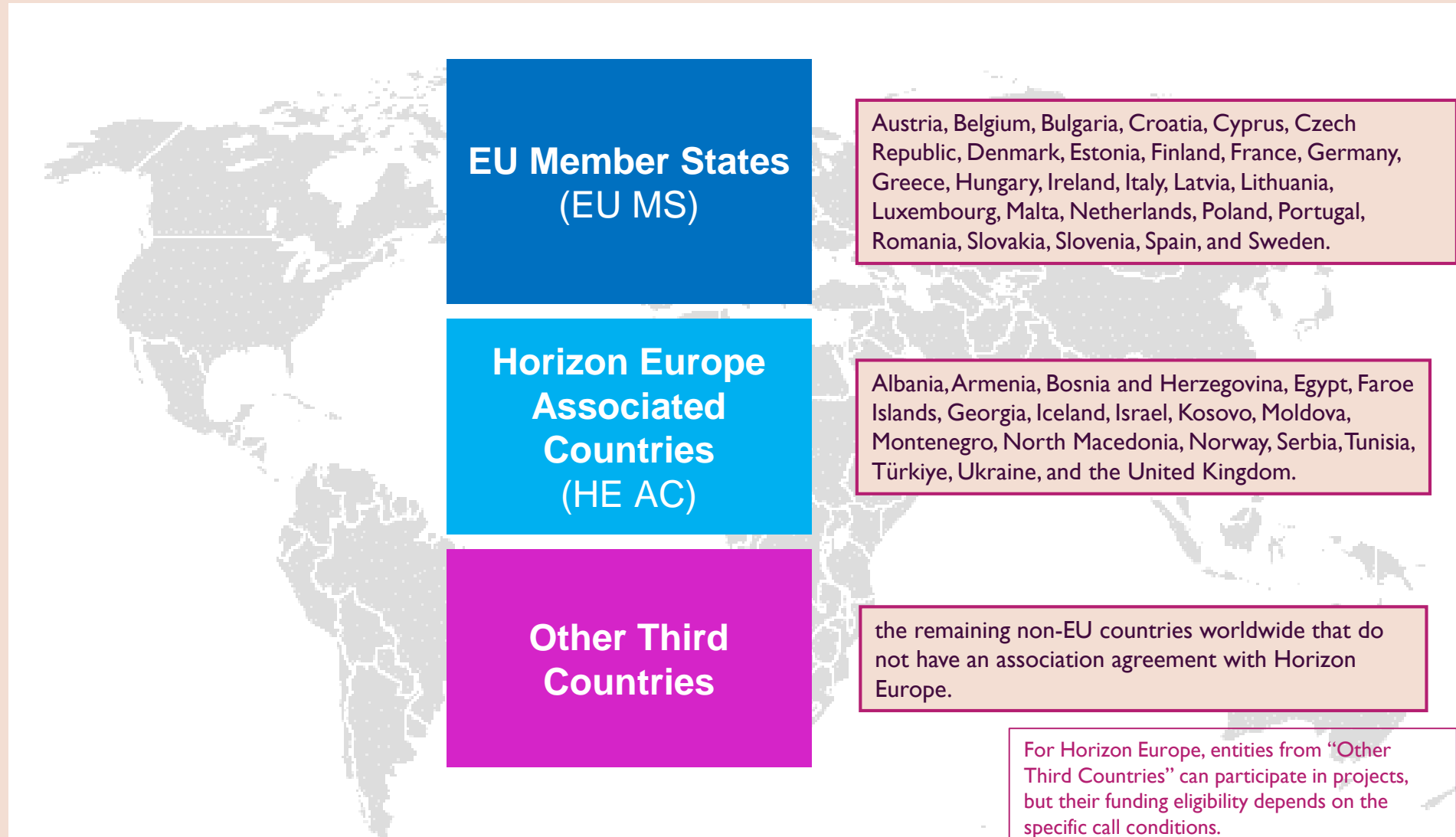
Researcher applies to vacancies in selected projects



Researcher participates in the project activities

<https://msca-glopol.eu/>

Some Terminology



Beneficiary vs Associated Partner



Beneficiary

- Signs the Grant Agreement with the EU
- Minimum number and geographical requirements
- Receives funding directly



Associated partner

- Does not sign the Grant Agreement
- Contributes to the action (e.g. hosts staff or researchers)
- Does not directly receive funding

Organisations vs individuals



Organisation

- Legal entity
- From academic or non-academic sector
- Beneficiary or associated partner



Individual researcher

- Any nationality
- Any topic/field
- Mobility is required
- Specific conditions depending on which action



MSCA Staff Exchanges

Main features
(currently open call)

What is Staff Exchanges?



Research & Innovation **mobility** action



It equips researchers and organisations **worldwide** with advanced skills and cutting knowledge



It fosters mobility of entities from both the **academic** and **private** sectors



Can be combined with other programmes (**synergy**)

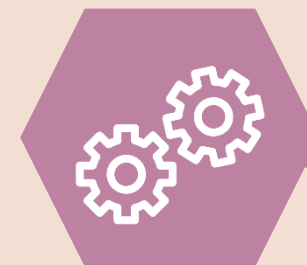
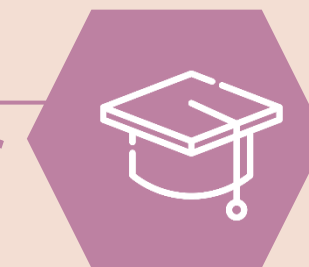


The **budget** allocated in 2026 call is **97.92 M€**

Who can participate in MSCA-SE projects?

Consortium of min. **3 legal entities** in **3 different countries**, 2 of which in a different EU Member State or HE Associated Country

Academic sector



Non-academic sector

NEW

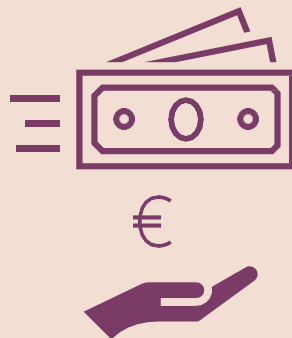
The consortium must include participating organisations from both academic and non-academic sectors



Key features of Staff Exchanges



BOTTOM UP
with different
scientific panels



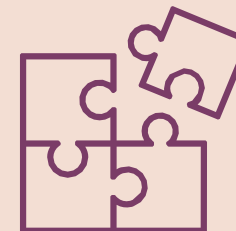
Unit cost 5170 €
2870 € - staff allowance
2300 € - organisation



SECONDMENTS
1-12 months/staff
Interdisciplinary
Intersectoral
International



DURATION
4 years
Max 360 person-
months per project



SYNERGY
EU grants
Not MSCA

The SE action funds short-term international and inter-sectoral exchanges of staff members involved in research and innovation activities of participating organisations.

Exchanged staff benefit from new knowledge, skills and career development perspectives, while participating organisations increase their research and innovation capacities.

Objectives



International,
inter-sectoral
and
interdisciplinary
mobility of R&I
staff
(secondments)



Knowledge
transfer
between
participating
organisations



Collaboration
between the
academic and
non-academic
sectors
(including
SMEs)



Cooperation
across the
globe

Eligible Staff



Any type of staff involved in R&I activities (researchers, administrative staff, managerial staff, technical staff)

Each staff member is seconded for a period of **1 to 12 months** (may be split into several stays)

Seconded staff members

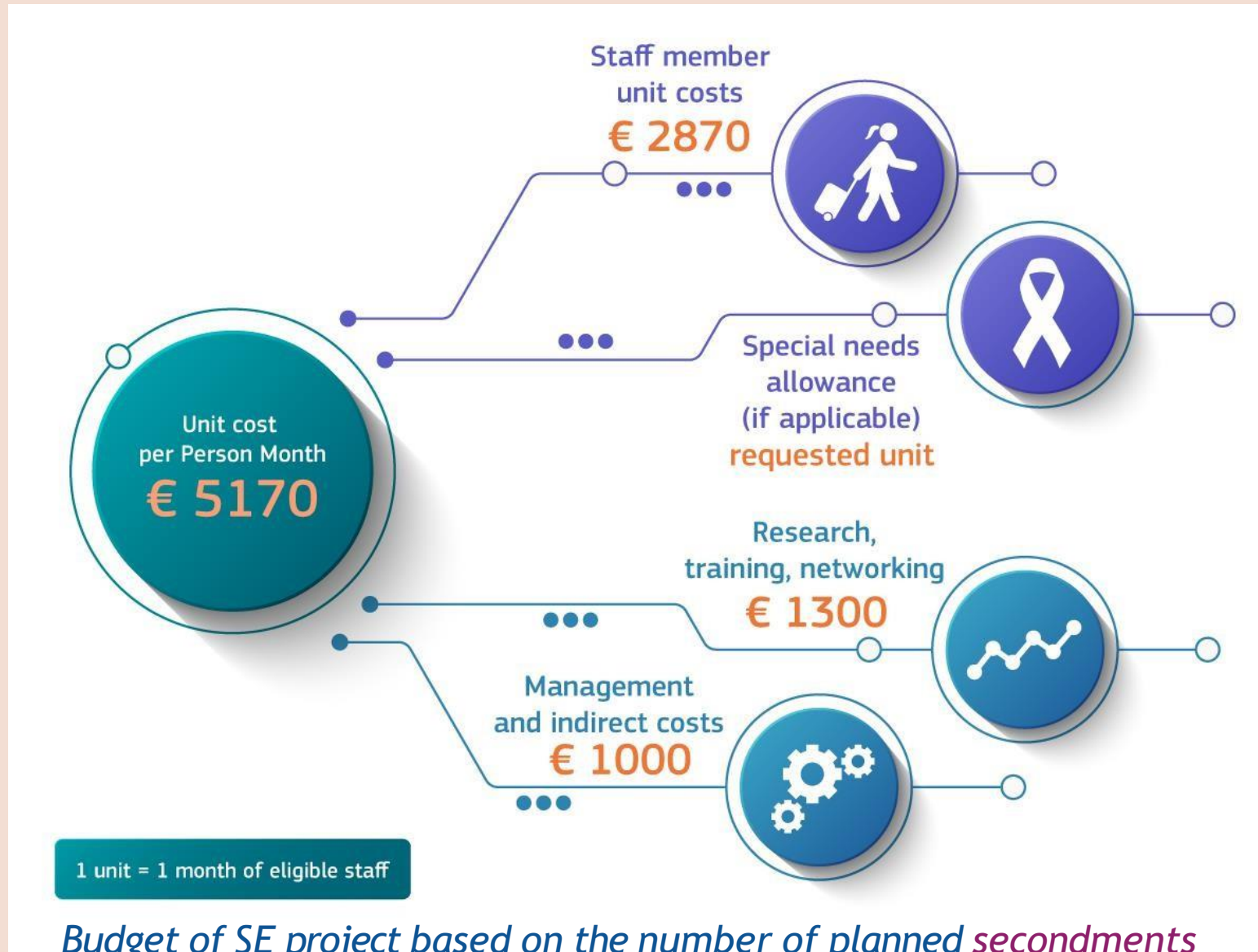


Researchers at any career stage (e.g. from doctoral candidates to postdoctoral researchers)

Staff needs to be devoted full-time (no part time) to the action during the secondment

After the secondment, staff should return to their sending institution

What does Staff Exchanges fund?



Key Dates & Budget Call 2026



Call Opening 2026: **16 December 2025**



Call Closure: **16 April 2026**



Call 2026 Budget: **97.92 M€**

Key Dates & Budget Call 2027



Call Opening 2026: 15 December 2026



Call Closure: 15 April 2027



Call 2026 Budget: 95.04 M€



MSCA Doctoral Networks

Main features
(will be open in May 2026)

MSCA Doctoral Networks: What is a Doctoral Network (DN) ?



- ✓ One consortium
- ✓ Proposing a research project
- ✓ With interlinked individual PhD research projects
- ✓ For doctoral candidates

Eligible participants

Who can apply?

- ✓ Any Legal Entity worldwide
- ✓ But not all applicants are eligible for funding

**Min. 3 entities from 3 ≈ MS/AC
of which 1 from a MS
as beneficiary**

*No minimum / maximum number of **Associated Partners***



Consortia

- ✓ Universities, research institutions and research infrastructures
- ✓ Businesses including SMEs
- ✓ Other socio-economic actors

MSCA Doctoral Networks

3 Types of Doctoral Programmes

1. Doctoral Networks - DN



Main Activity: Employment of doctoral candidates and international mobility

01

- Doctoral training in academia and/or industry
- Max. 540 person-months
- 3–36 months fellowship duration per researcher
- 48 months total project duration

2. Industrial Doctorates – ID



02

- Joint doctoral training between academia and industry
- Researcher spends at least 50% of time in industry
- Joint supervision
- Max. 540 person-months - 3–36 months fellowship duration per researcher - 48 months total project duration

3. Joint Doctorates – JD



03

- Joint doctoral programme leading to a joint doctoral degree
- Joint recruitment and supervision
- Max. 540 person-months - 3–48 months fellowship duration per researcher - 60 months total project duration



All 3 modes compete within the same scientific panels

MSCA Doctoral Networks

Institutions:

- Consortium with minimum 3 organisations in 3 different countries
- Associated partners

Target:

- Researchers without a doctoral degree

Funding:

- Researcher unit cost (living €4250, mobility €710 and if relevant family allowance €660)
- Institutional unit cost (management €1200, research, training and networking costs €1600)

Length:

- Max 48 months for standard Doctoral Networks and Industrial Doctorates(3yr fellowships)
- Max 60 months for Joint Doctorates (4yr fellowships)

Key Dates & Budget Call 2026



Call Opening 2026: 28 May 2026



Call Closure: 24 November 2026



Call 2026 Budget: 593.03 M€

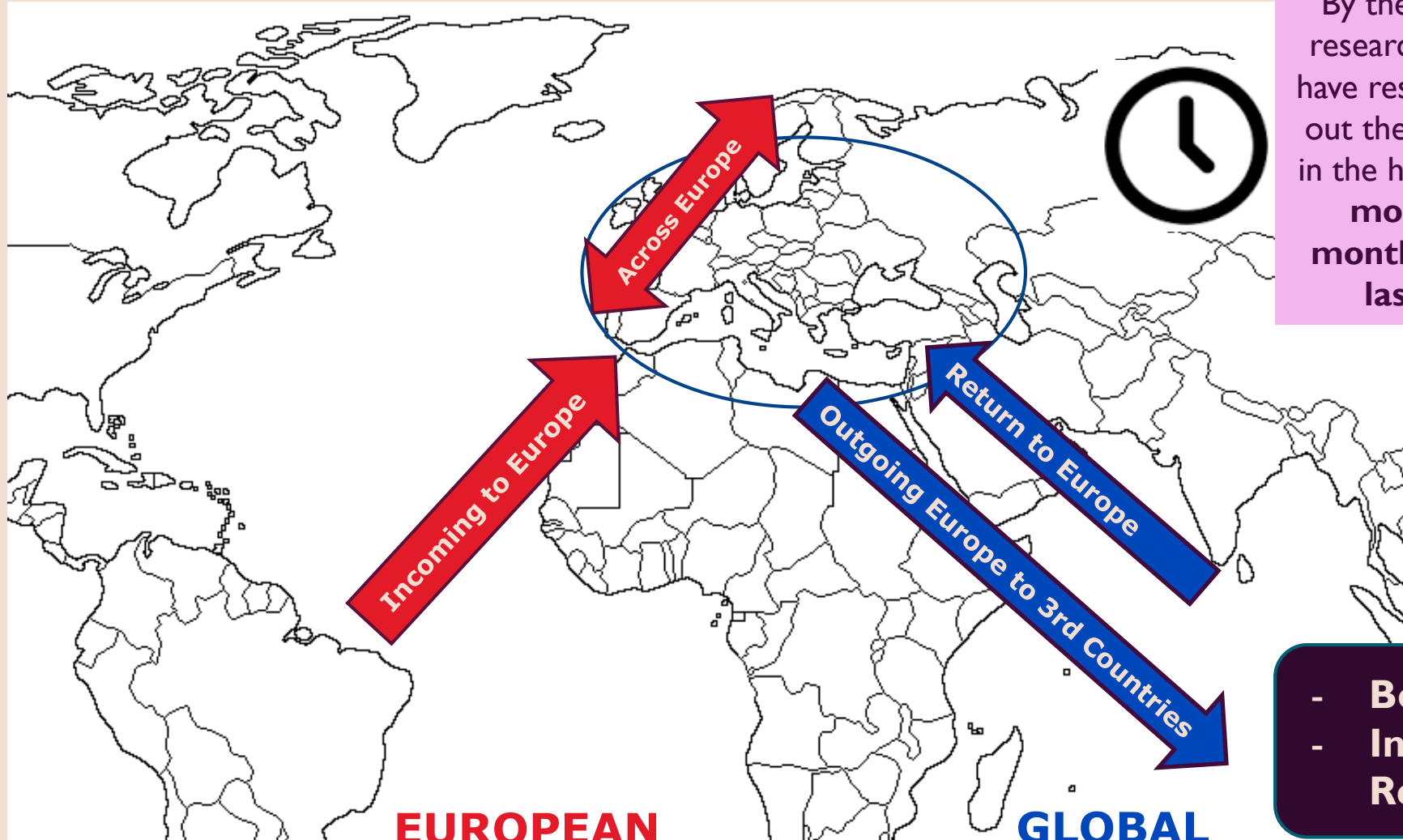


MSCA Postdoctoral Fellowships

Main features

(will be open on 9 April 2026)

MSCA Postdoctoral Fellowships



By the call deadline, researchers must not have resided or carried out their main activity in the host country for **more than 12 months within the last 3 years.**

**EUROPEAN
FELLOWSHIPS**

**GLOBAL
FELLOWSHIPS**

- **Bottom up**
- **International Mobility Required**

MSCA European Fellowships - EF

Postdoctoral Researcher + Host Institution in Europe + Supervisor

Project Duration
Min 12 months
Max 24 months

Host Institution:

- **Location:** Within Europe (EU Member / Associated Countries)
- **Sector:** Academic or Non-academic institutions
- **A supervisor is selected**
- **Researcher is employed under a work contract**

Postdoctoral Researcher:

- **Must not have resided or carried out main activity in the host country for more than 12 months within the last 3 years**
- **Can be of any nationality**
 - (in case of reintegration → must be nationals or long-term residents of EU MS / Horizon Europe AC)

MSCA Global Fellowships - GF

Different than EF!

Postdoctoral Researcher + Host Institution in Europe + Partner Organisation outside Europe +
Two Supervisors (one in each institution)

Host Institution (Project Coordinator)

- **Location:** Within Europe (EU Member State / Associated Countries)
- **Sector:** Academic / Non-academic institutions
- **A supervisor is selected**
- **Researcher is employed under a work contract**

Partner Organisation (Outside Europe)

- **Location:** Third Countries (Non-EU / Non-Associated Countries)
- **Sector:** Academic / Non-academic institution
- **A supervisor is selected**
- Must provide a **LoC** during project application
- Signs a **partnership agreement** with the coordinator
 - Does **not** sign the Grant Agreement
 - Does **not** receive funding directly; funds are transferred via the coordinator

*Project Duration
Min 24 months
Max 36 months*

Postdoctoral Researcher

- 🕒 **Project duration:** minimum 24 months, maximum 36 months
- 🔄 **Includes a mandatory 12-month return phase to Europe**

*Due to the mandatory
12-month return phase*

Researcher Eligibility Criteria

European Fellowships

Global Fellowships

<h3>Nationality</h3>	<p>Open to researchers of any nationality (in case of reintegration → must be nationals or long-term residents of EU MS / Horizon Europe AC)</p>	<p>Must be a citizen or long-term resident (≥5 years) of an EU Member State or Associated Country</p>
<h3>Mobility</h3>	<ul style="list-style-type: none"> By the call deadline, researchers must not have resided or carried out their main activity (work, studies, etc.) in the country of the host organisation for more than 12 months in the 3 years immediately prior to the call deadline. 	<ul style="list-style-type: none"> By the call deadline, researchers must not have resided or carried out their main activity (work, studies, etc.) in the Third Country where the outgoing phase will take place for more than 12 months in the last 3 years. No such condition applies for the return host country.
<h3>Research Experience</h3>	<p>Must have a doctoral degree or have successfully defended the thesis by the call deadline. Must have no more than 8 years of research experience from the date of the first doctoral degree to the call deadline.</p> <p>The following periods can be deducted from the total research experience (to be declared in the proposal forms):</p> <ul style="list-style-type: none"> Maternity leave (18 months per child or the actual duration if longer) Paternity leave (actual duration taken) Compulsory military service Periods spent outside research Long-term sick leave (more than 30 days) Time spent to teaching / managerial activities in universities 	

Financial Structure

Contributions for the recruited researcher per person-month			Institutional unit contributions per person-month	
Living Allowance	Mobility Allowance	Family Allowance	Research – Training – Network Cost	Institutional Cost
€ 6.350*	€ 710	€ 660	€ 1.000	€ 650

Fixed costs per month



* The researcher's budget is multiplied by a country-specific coefficient. **CCC for Egypt: 70%.**
* This amount is paid in full to the researcher after tax and social security deductions.

Evaluation Criteria

Excellence	Impact	Quality and efficiency of the implementation
<p>Quality and pertinence of the project's research and innovation objectives (and the extent to which they are ambitious, and go beyond the state of the art)</p>	<p>Credibility of the measures to enhance the career perspectives and employability of the researcher and contribution to their skills development</p>	<p>Quality and effectiveness of the work plan, assessment of risks and appropriateness of the effort assigned to work packages</p>
<p>Soundness of the proposed methodology (including <i>interdisciplinary</i> approaches, consideration of the <i>gender</i> dimension and other <i>diversity</i> aspects if relevant for the research project, and the quality of <i>open science</i> practices)</p>	<p>Suitability and quality of the measures to maximise expected outcomes and impacts, as set out in the dissemination and exploitation plan, including communication activities</p>	<p>Quality and capacity of the host institutions and participating organisations, including hosting arrangements</p>
<p>Quality of the supervision, training and of the two-way transfer of knowledge between the researcher and the host</p>	<p>The magnitude and importance of the project's contribution to the expected scientific, societal and economic impacts</p>	
<p>Quality and appropriateness of the researcher's professional experience, competences and skills</p>		
<p>50%</p>	<p>30%</p>	<p>20%</p>

Call Information



Call Budget

EF: 339.19 M. EUR
GF: 59.86 M. EUR
Total: **399 Million EUR**



Call Calendar

Opening: **9 April 2026**
Closure: **9 Sep 2026**



Evaluation

Evaluation Results: 5 months
after call deadline

GA Signature: 3 months after
results



MSCA COFUND

Main features
(currently open call)

What is MSCA COFUND?

Mono-beneficiary action:

- new or existing national, regional, institutional schemes for doctoral training & postdoctoral fellowships

Focus:

- best practice, high standards & excellent working conditions, sustainable structuring effects

MSCA COFUND

Main Objective

*“co-finance new or existing **doctoral programmes** and postdoctoral fellowship schemes at national, regional or international level with the aim to spread the best practices of the MSCA including international, inter-sectoral and interdisciplinary research training, as well as international and cross-sectoral mobility of researchers at all stages of their career”*

Budget (COFUND-2026): EUR 105.46 million

Call opening : 16 December 2025

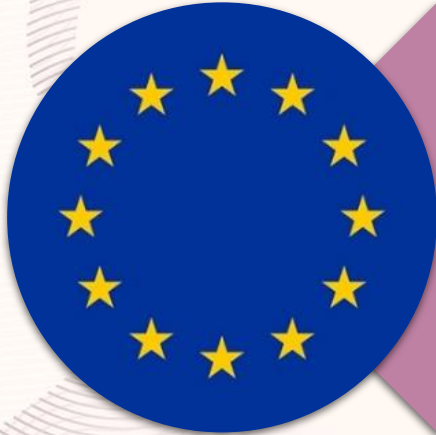
Call deadline: 08 April 2026

Budget (COFUND-2027): EUR 51.25 million

Call opening : 8 December 2026

Call deadline: 06 April 2027

MSCA COFUND – Eligible participants

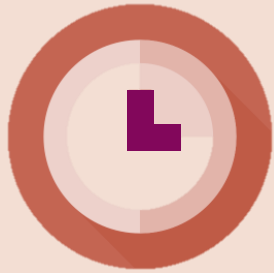


Single legal entity established in an EU Member State



Single legal entity established in HE associated country

MSCA COFUND



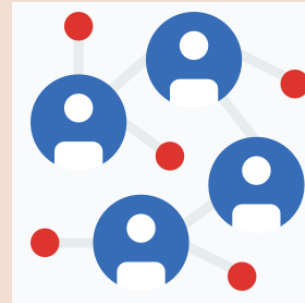
DURATION

Max 5 years



COMPOSITION

1 beneficiary from EU MS
or HEAC



FELLOWSHIP

For doctoral and
postdoctoral researchers for
minimum 3 months



BUDGET

Co-funding
Max EUR 10 million per
beneficiary per call

MSCA COFUND

Institutions:

- Single beneficiary
- Implementing partners
- Associated partners

Target:

- Doctoral programmes: Researchers without a doctoral degree
- Postdoctoral programmes: Researchers with a doctoral degree

Funding:

- COFUND allowance per person-month (70% living + mobility allowance in DN or PF)
- Living allowances doctorates €3500, postdoc €4980
- Co-funded by beneficiary with salaries set at attractive levels above the minimum remuneration

Length:

- Minimum 3 month fellowships
- Maximum 60 month project duration



MSCA CHOOSE EUROPE

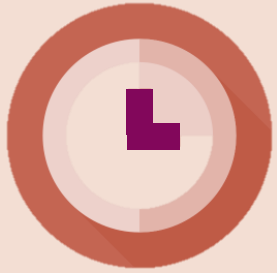
Main features

(will be open in December 2026)

MSCA Choose Europe for Science

- **Mono-beneficiary Action** to co-fund programmes in which academic or non-academic organisations recruit and train researchers with a vision to employment beyond the project period
- **Target group:** researchers at post-doctoral level who comply with the mobility rule
- **Focus:**
 - ❖ to increase the attractiveness of the European R&I ecosystem by **tackling precarity in research careers**
 - ❖ spread **best practices** of the MSCA by promoting **high standards** in the recruitment and evaluation process and **excellent working conditions**
 - ❖ introduce **lasting impact**, through risk-sharing and by promoting excellent and sustainable accession and progression systems

MSCA Choose Europe for Science 2027 call



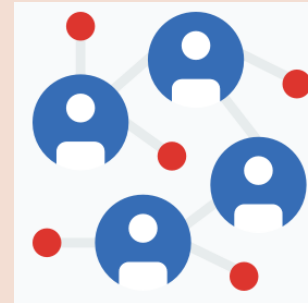
DURATION

2-3 yrs EU-funded phase
2 yrs phase fully funded by the beneficiary (and partners)



COMPOSITION

1 beneficiary from EU MS or HE AC
+ implementing partners



RECRUITMENT

For at least 3 researchers at post-doctoral level



BUDGET

EUR 51.25 million
Max EUR 5 million per beneficiary per call
Co-funding required

MSCA Choose Europe for Science call 2027

Institutions:

- Single beneficiary
- Implementing partners
- Associated partners

Target:

- Eligible researchers with a doctoral degree

Funding:

- RTN (€1000) and Institutional Unit Costs (€650) corresponding to full PF unit contributions with CCCs applied to living allowances in the EU-funded phase (€6350)
- Mobility allowance €710, family allowances € 660
- Co-funded by beneficiary, with salaries set at attractive levels in the non-EU funded phase

Length:

- Researchers must be recruited within the first 12 months
- EU-funded phase of 24 months for a 48-month fellowship or 36 months for a 60-month fellowship
- 24-month phase funded entirely by the beneficiary and partners



MSCA and CITIZENS

Main features

(will be open in March 2027)



MSCA & Citizens

It aims to organise a one-day event held on the same day each year across all EU Member States and Associated Countries, bringing researchers together with the general public and encouraging young people to engage with science.

It aims to bring school classes to research facilities and researchers to schools or other pedagogical and educational centres in order to enable direct interaction between researchers and pupils on societal challenges and the important role of research in addressing them.



MSCA and Citizens

Institutions:

- Can be single beneficiary or multi beneficiary
- Any organization able to organize a public event to promote science and research (e.g. universities, museums, science outreach organisations)

Task:

- European Researchers' Night (last Friday of September)
- Researchers at Schools initiative

Funding:

- Max 350 000 EUR

Length:

- Max 2 years

Participation of third country organisations

Organisations from non-associated third countries can participate as:

MSCA Action	Beneficiary	Associated Partner
Doctoral Networks	Yes*	Yes
Staff Exchanges	No	Yes
Postdoctoral Fellowships	No	Yes
COFUND	No	Yes

*Organisations established in non-associated third countries are eligible 1) for automatic funding as beneficiaries if based in low- and medium-income countries listed in the [Horizon Europe General Annexes](#) or 2) for exceptional funding as beneficiaries if based in countries not listed in the General Annexes provided that their participation is considered essential for implementing the action.

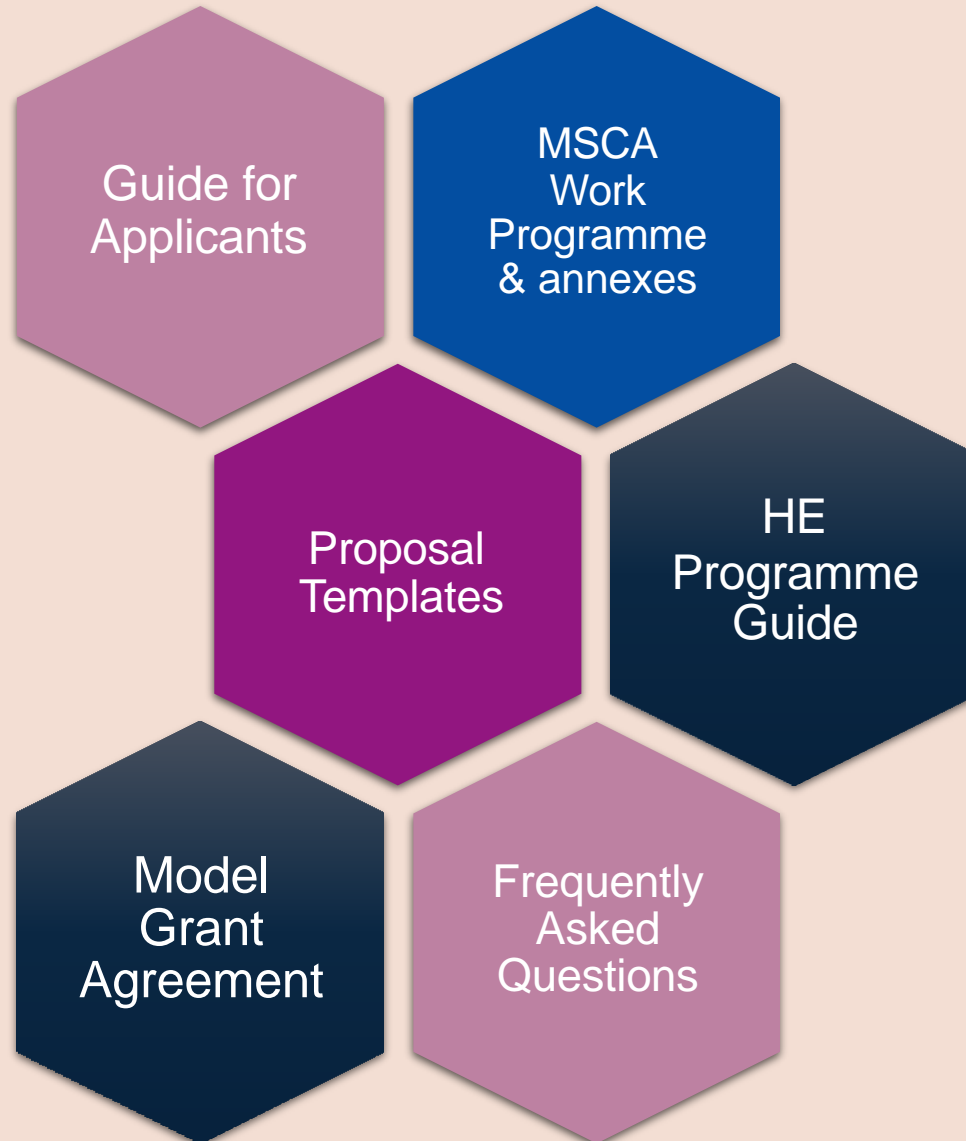
Participation of third country individuals

Individuals from third countries can participate in all MSCA actions

MSCA Action	Eligible	Where to look for vacancies
Doctoral Networks	Yes	EURAXESS
Staff Exchanges	Yes	Sending institution
Postdoctoral Fellowships	Yes	Find host organisation / EURAXESS
COFUND	Yes	EURAXESS

Year	Action	Opening	Deadline
2026	Staff Exchanges Staff Exchanges	16 December 2025 15 December 2026	16 April 2026 15 April 2027
	Postdoctoral Fellowships	9 April 2026	9 September 2026
	Doctoral Networks	28 May 2026	24 November 2026
	COFUND COFUND COFUND: Choose Europe	16 December 2025 8 December 2026 8 December 2026	8 April 2026 6 April 2027 6 April 2027
	MSCA and CITIZENS	9 March 2027	8 June 2027

Reference Documents



Thank you..



MSCA-GLOPOL is funded by the European Union. Views and opinions expressed are however those of the author(s) only and do not necessarily reflect those of the European Union or the European Research Executive Agency (REA). Neither the European Union nor the granting authority can be held responsible for them.



**Funded by
the European Union**